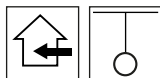


ISTRICE

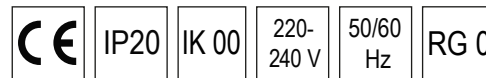
by Arianna e Bruno Teardo



USE



FEATURES



DESCRIPTION

Suspension lamp for diffused and enveloping light. The diffuser consists of curved decorative elements, cut in an irregular way, which determine an original play of light. The elements are flexible because they are made of self-extinguishing PVC with a double-sided chrome finish. Structure and top cover in white painted metal. Steel support ropes, power cord covered with transparent PVC.

SETTLEMENT CODE

Complete the code by entering the number corresponding to the desired color in the space provided

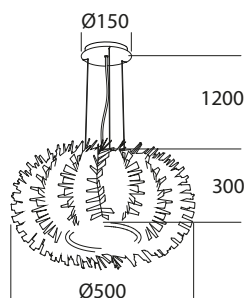
STANDARD COLORS



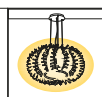
Chrome finish: **0**

other colors on request

ISTRICE 500



IP20



TYPE

E27

POWER

1x12W*

FLUX¹

1x1320lm*



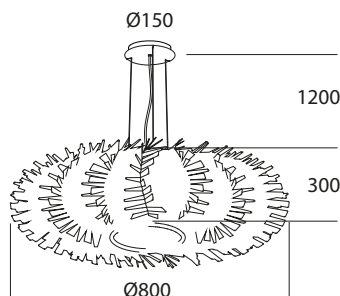
CODE

CCT 3000°K
CRI>90

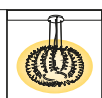
CCT 4000°K
CRI>90

L077 .IN

ISTRICE 800



IP20



TYPE

E27

POWER

3x10W*

FLUX¹

3x1100lm*



CCT 3000°K
CRI>90

CCT 4000°K
CRI>90

L078 .IN

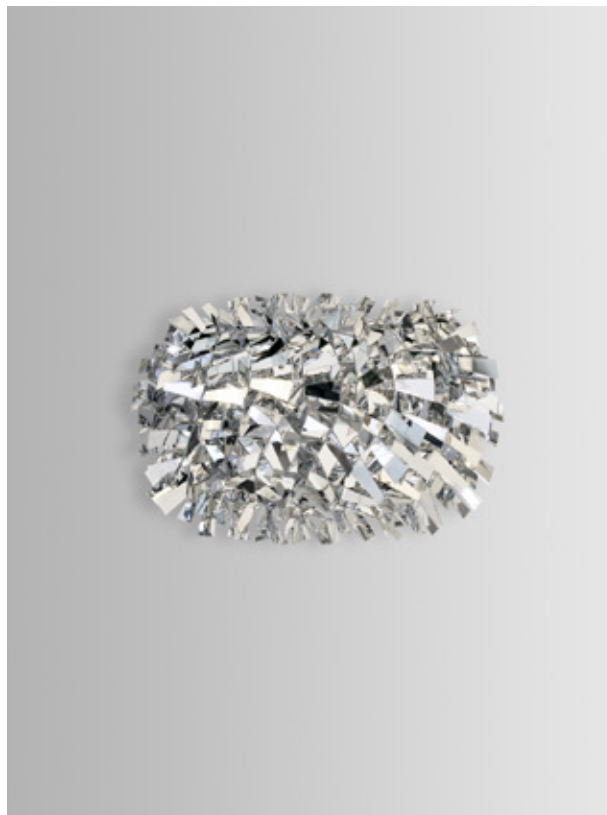
Other version on request

*Suggested value - light source not supplied

¹ Nominal luminous flux

ISTRICE

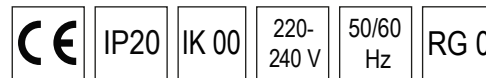
by Arianna e Bruno Teardo



USE



FEATURES



DESCRIPTION

Wall lamp for diffused and enveloping light. The diffuser consists of curved decorative elements, cut in an irregular way, which determine an original play of light. The elements are flexible because they are made of self-extinguishing PVC with double-sided chrome finish. Bent metal structure painted white.

SETTLEMENT CODE

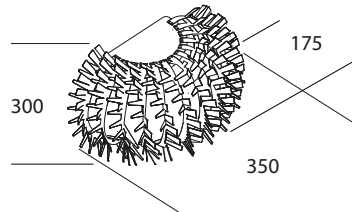
Complete the code by entering the number corresponding to the desired color in the space provided

STANDARD COLORS

 Chrome finish: **0**

other colors on request

ISTRICE-AP



IP20



TYPE

E27

POWER

2x8W*

FLUX¹

2x880lm*



CODE

CCT 3000°K
CRI>90

CCT 4000°K
CRI>90

L079 .IN